

# SØKNADSKART

Lokalitet:  
Kalhag

Lok. No.:  
13220

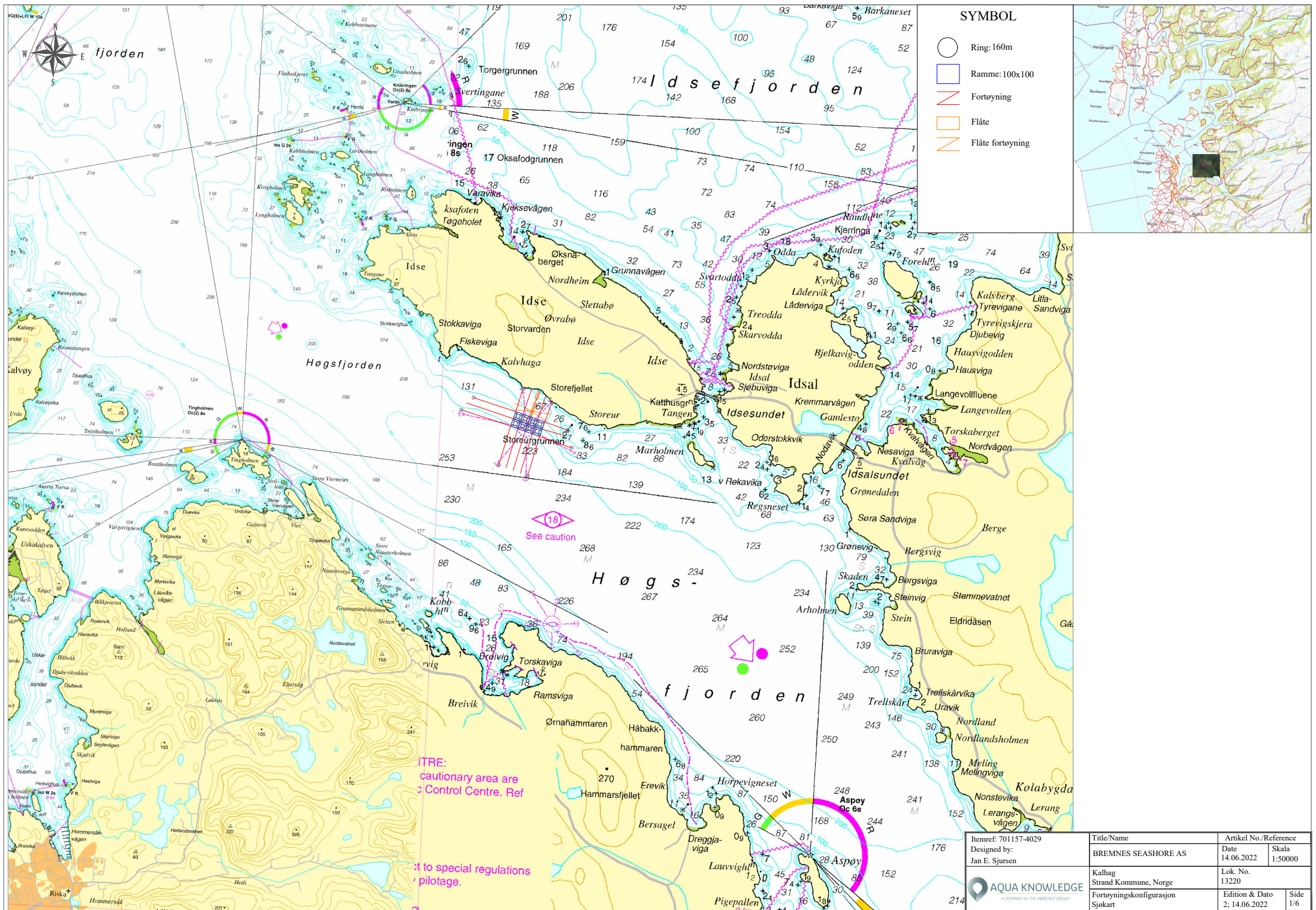
Søker:  
Bremnes Seashore AS



# AQUA KNOWLEDGE

---

*A COMPANY IN THE MØRENOT GROUP*



**SYMBOL**

- Ring: 160m
- Ramme: 100x100
- Fortøyning
- Flåte
- Flåte fortøyning



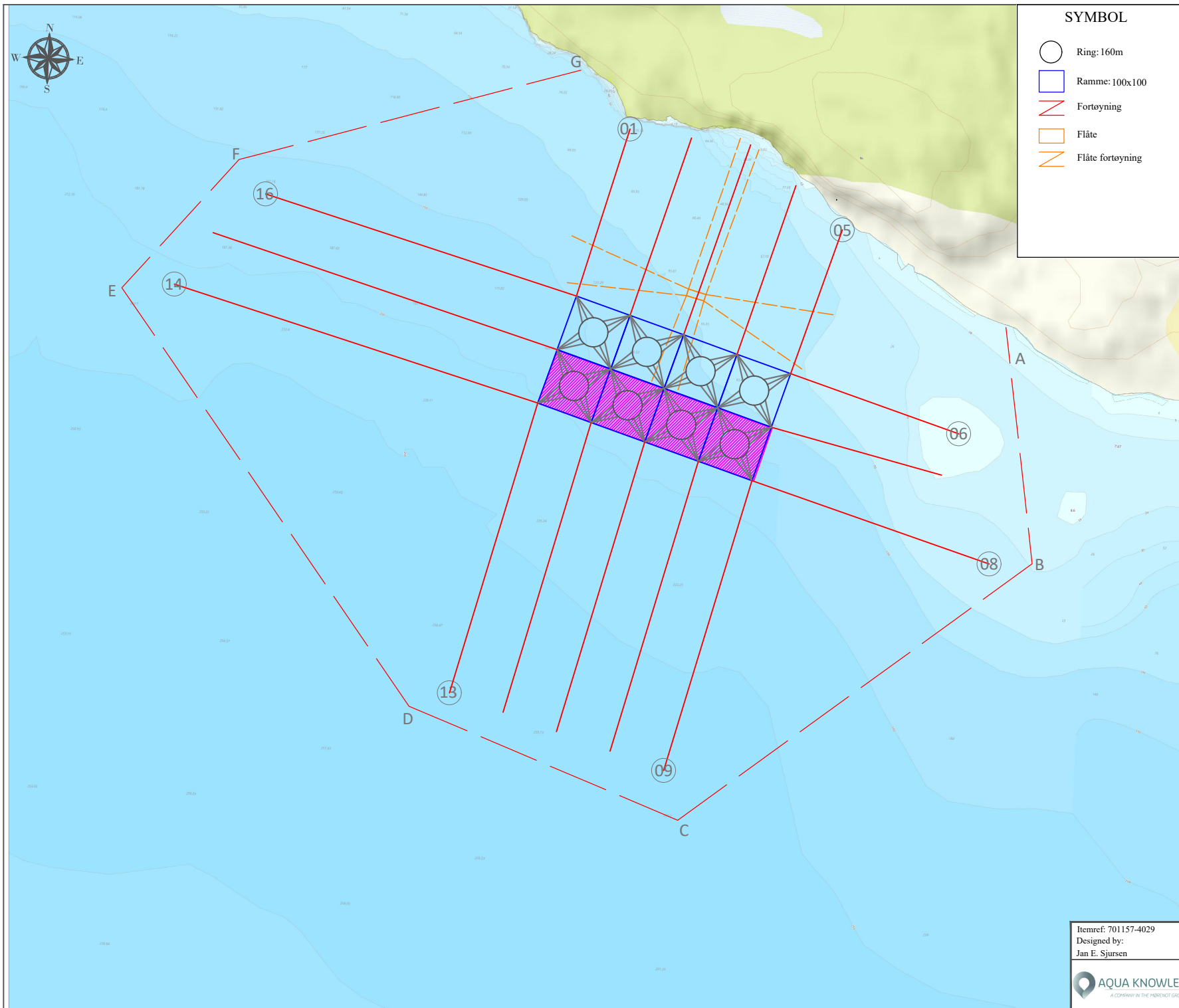
ITRE: cautionary area are  
Control Centre. Ref

to special regulations  
pilotage.

Itemref: 701157-4029	Title/Name	Artikel No./Reference
Designed by: Jan E. Sjursen	BREMNES SEASHORE AS	Skala 1:50000
	Kalgh Strand Kommune, Norge	Lok. No. 13220
	Fortøyningskonfigurasjon Sjøkart	Edition & Dato 2; 14.06.2022
		Side 1/6







**SYMBOL**

- Ring: 160m
- Ramme: 100x100
- Fortøyning
- Flåte
- Flåte fortøyning




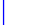




GPS-posisjoner - Fortøyning					
1	58 58.686	N	5 55.994	Ø	
5	58 58.613	N	5 56.331	Ø	
6	58 58.454	N	5 56.526	Ø	
8	58 58.350	N	5 56.583	Ø	
9	58 58.172	N	5 56.092	Ø	
13	58 58.227	N	5 55.753	Ø	
14	58 58.545	N	5 55.296	Ø	
16	58 58.621	N	5 55.432	Ø	
GPS-posisjoner - Rammeanlegg					
NV	58 58.550	N	5 55.922	Ø	
NØ	58 58.496	N	5 56.261	Ø	
SØ	58 58.408	N	5 56.208	Ø	
SV	58 58.463	N	5 55.870	Ø	
MA	58 58.479	N	5 56.065	Ø	

GPS-posisjon - Flåte					
MF	58 58.567	N	5 56.178	Ø	

Itemref: 701157-4029	Title/Name		Artikel No./Reference	
Designed by: Jan E. Sjursen	BREMNES SEASHORE AS		Date 14.06.2022	Skala 1:7500
 <small>A COMPANY IN THE PARRENØT GROUP</small>	Kalhag Strand Kommune, Norge		Lok. No. 13220	
	Fortøyningskonfigurasjon Dybder		Edition & Dato 2; 14.06.2022	Side 2/6

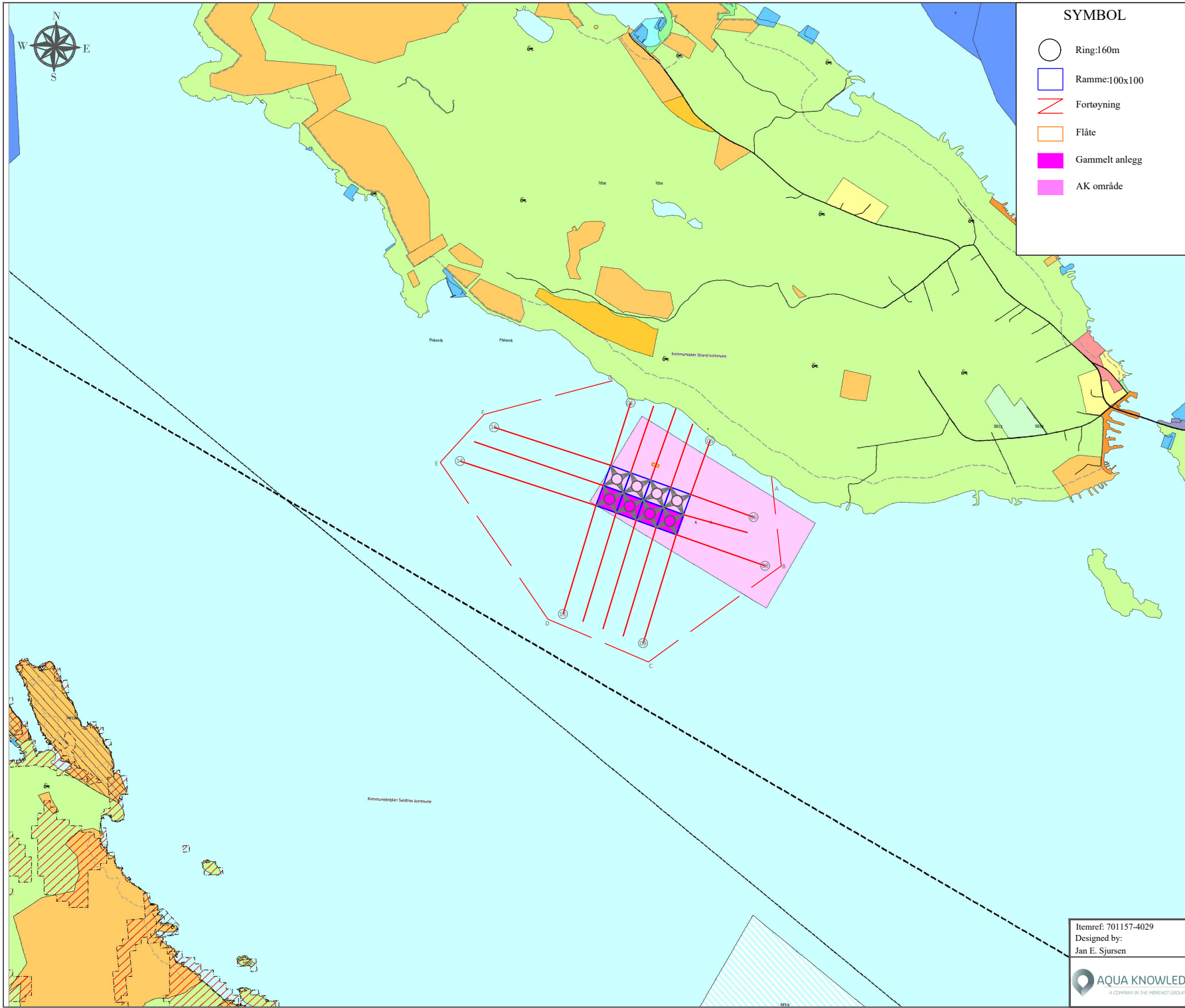


**SYMBOL**

-  Ring:160m
-  Ramme:100x100
-  Fortøyning
-  Flåte
-  Gammelt anlegg
-  AK område



Forankringsområde					
A	58 58.541	N	5 56.592	Ø	
B	58 58.352	N	5 56.650	Ø	
C	58 58.133	N	5 56.117	Ø	
D	58 58.215	N	5 55.691	Ø	
E	58 58.540	N	5 55.215	Ø	
F	58 58.647	N	5 55.388	Ø	
G	58 58.732	N	5 55.913	Ø	

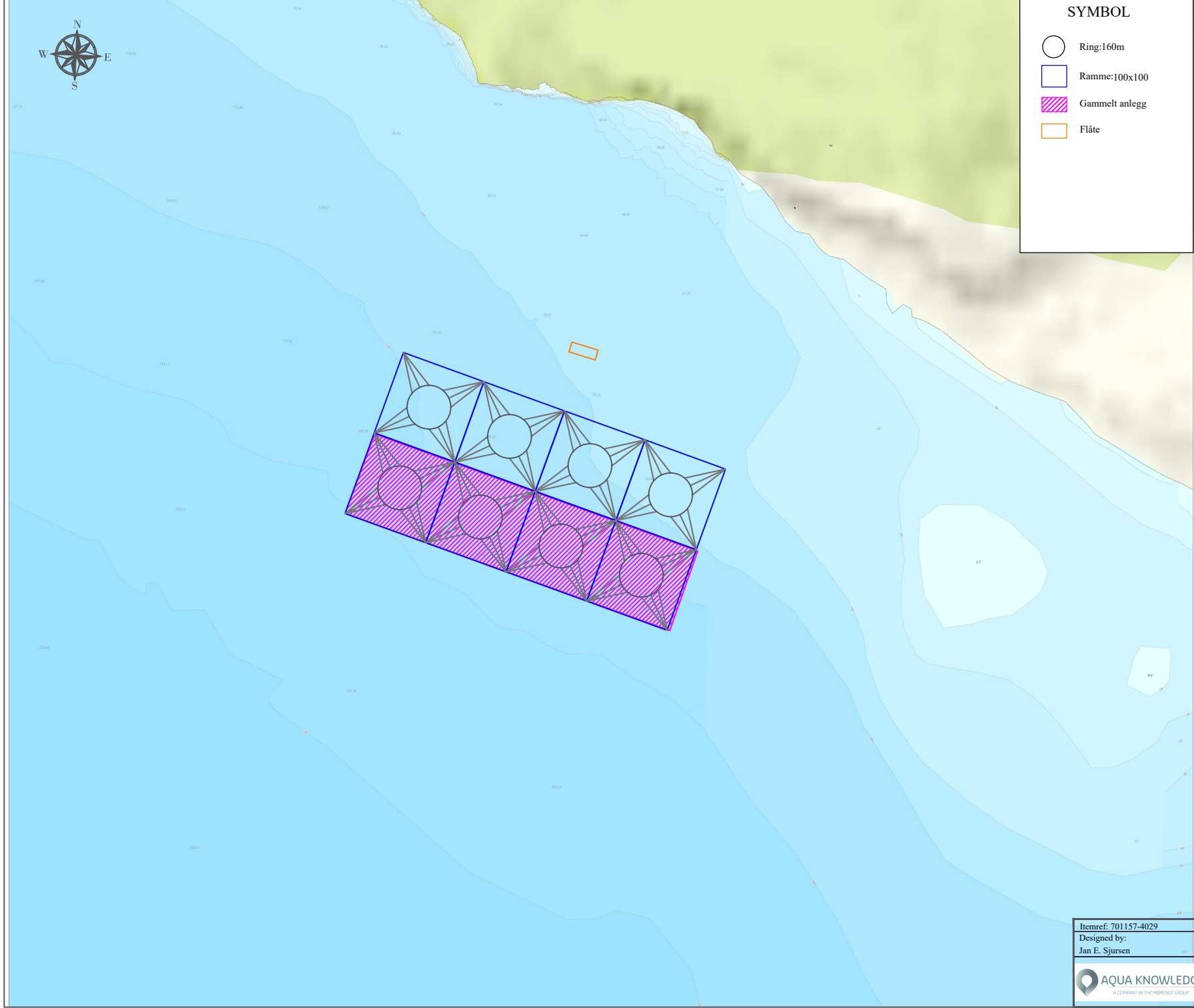
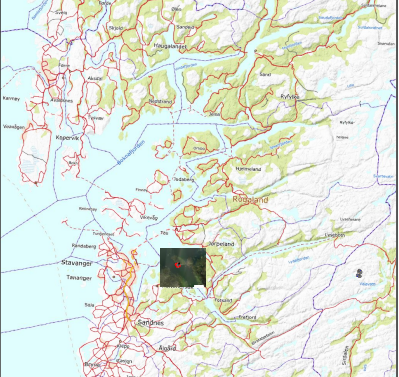



Itemref: 701157-4029 Designed by: Jan E. Sjursen	Title/Name BREMNES SEASHORE AS		Artikel No./Reference	
	Date 14.06.2022	Skala 1:20000		
 A COMPANY IN THE PARBRANT GROUP	Kalthag Strand Kommune, Norge		Lok. No. 13220	
	Fortøyningskonfigurasjon Kommunekart		Edition & Dato 2; 14.06.2022	
			Side 3/6	



**SYMBOL**

- Ring:160m
- Ramme:100x100
- ▨ Gammelt anlegg
- Flåte



Itemref: 701157-4029	Title/Name	Artikel No./Reference	
Designed by: Jan E. Sjursen	BREMNES SEASHORE AS	Date 14.06.2022	Skala 1:5000
 A COMPANY IN THE PARRENØT GROUP	Kalhag Strand Kommune, Norge	Lok. No. 13220	
	Fortøyningskonfigurasjon Anleggskonfigurasjon	Edition & Dato 2; 14.06.2022	Side 4/6

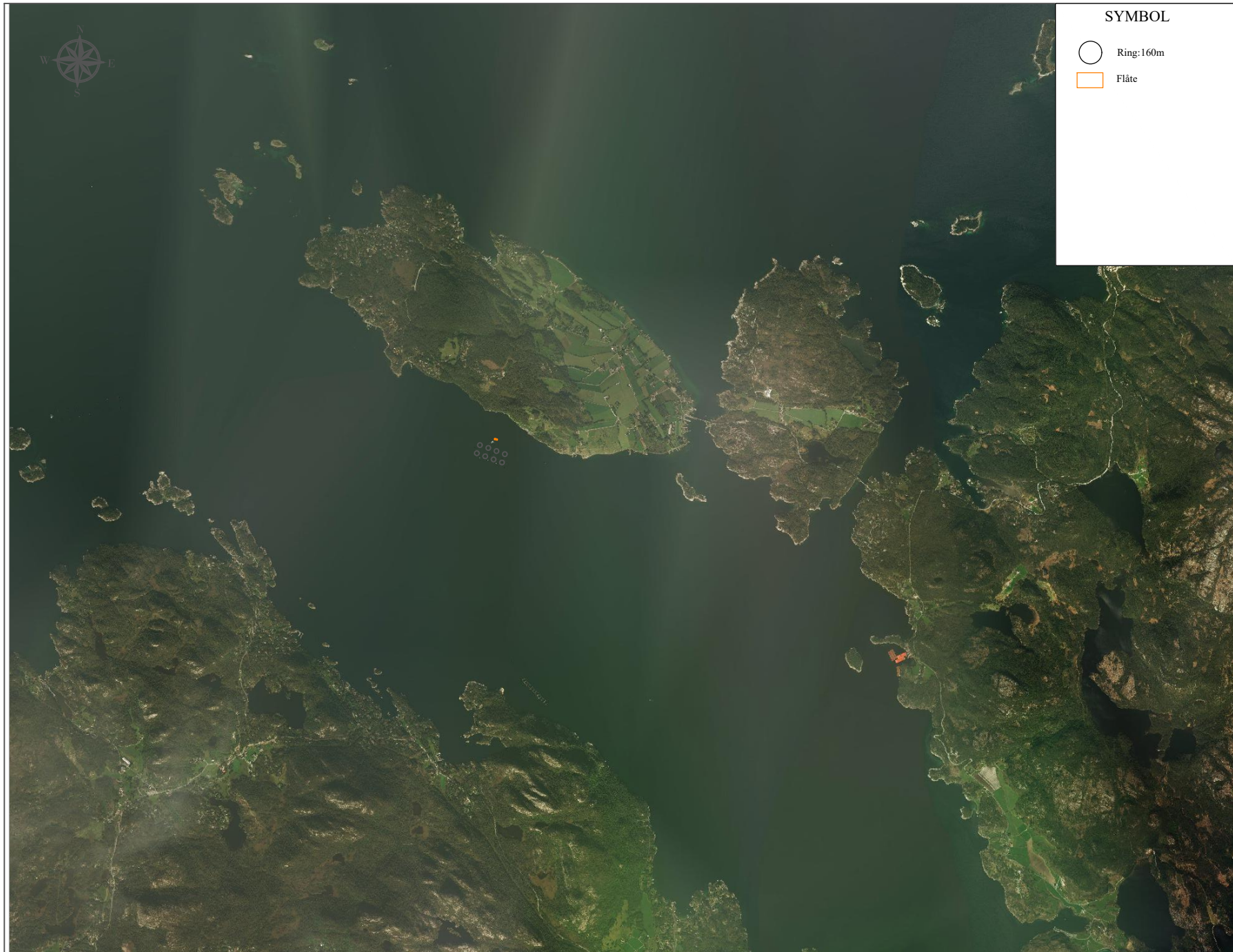
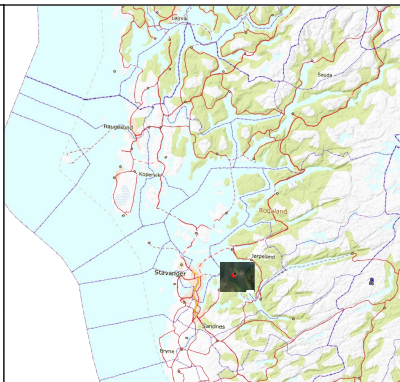





**SYMBOL**


○ Ring: 160m

□ Flåte



Itemref: 701157-4029	Title/Name		Artikel No./Reference	
Designed by: Jan E. Sjursen	BREMNES SEASHORE AS		Date 14.06.2022	Skala 1:50000
 A COMPANY IN THE PARBRANT GROUP		Kalhag Strand Kommune, Norge		Lok. No. 13220
		Fortøyningskonfigurasjon Oversiktsbilde		Edition & Dato 2; 14.06.2022

Fortøyning - ytterpunkt						
1	58	58.688	N	5	56.026	Ø
2	58	58.673	N	5	56.132	Ø
3	58	58.659	N	5	56.231	Ø
4	58	58.623	N	5	56.319	Ø
5	58	58.591	N	5	56.416	Ø
6	58	58.449	N	5	56.625	Ø
7	58	58.406	N	5	56.583	Ø
8	58	58.340	N	5	56.740	Ø
9	58	58.117	N	5	56.158	Ø
10	58	58.133	N	5	56.059	Ø
11	58	58.149	N	5	55.959	Ø
12	58	58.165	N	5	55.860	Ø
13	58	58.181	N	5	55.760	Ø
14	58	58.555	N	5	55.223	Ø
15	58	58.605	N	5	55.289	Ø
16	58	58.644	N	5	55.382	Ø

Itemref: 701157-4029	Title/Name	Artikel No./Reference	
Designed by: Jan E. Sjursen	BREMNES SEASHORE AS	Date 14.06.2022	Skala 1:50000
 <b>AQUA KNOWLEDGE</b> <small>A COMPANY IN THE HIRENOR GROUP</small>	Kalhag Strand Kommune, Norge	Lok. No. 13220	
	Fortøyningskonfigurasjon GPS koordinater	Edition & Dato 2; 13.06.2022	